

REGISTRATION FORM

1. Enrollment Fee & Mailing Information

Conference fee per person: \$50

Seating is limited. Registration accepted on a first come, first served basis.
No refunds will be made after registration.

Mail this form along with your payment to:



Connecticut Community Care, Inc.
Development Office
43 Enterprise Drive
Bristol, CT 06010-7472

Registration Deadline:
June 9, 2010

2. Attendee Information

(Please list additional registrations on a separate sheet and attach)

Name _____

Title _____

Organization _____

Address _____

City, State, Zip _____

Phone _____ Fax _____

E-mail _____

3. Credit/Certification Information

Provider approved by the California Board of Registered Nursing, Provider Number 9443 for 5.5 contact hours. This program has also been approved for 3.0 Continuing Education Credit Hours by the National Association of Social Workers, CT and meets the continuing education criteria for Social Work Licensure renewal.

Please check below to indicate your preference

Social Work Credits Nursing Credits Certificate of Attendance

4. Box Lunch Option (optional)

A continental breakfast will be provided. Lunch is on your own. The restaurant inside the Marriott will be closed at lunchtime. A list of local restaurants will be provided at the conference.

You may order a box lunch for delivery to the conference area for an additional charge of **\$25** if you prefer. Box lunch includes: sandwich, soft drink/bottled water, potato salad, fresh fruit and a gourmet cookie.

To order a box lunch, select your choice below and include the **\$25** lunch fee with your registration fee

Turkey Breast Grilled Chilled Vegetables Classic Tuna Salad

5. Method of Payment

Check payable to CCCI is enclosed

Charge to: VISA Mastercard American Express Discover

Card No. _____ Verification # _____ Exp. Date _____

Signature _____

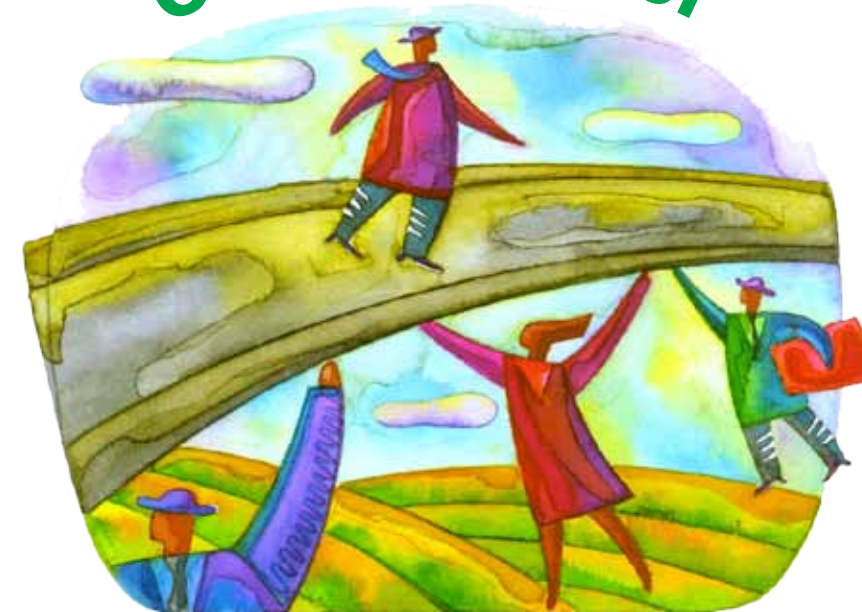
Please notify us of any accommodations you may need to participate fully at 860-314-2247 no later than June 7, 2010

Connecticut Community Care, Inc.

proudly presents the

Myra Kerr Memorial Education Conference

On the Path of



Emergency Preparedness

Where we've been - Where we are - Where we need to go

CONNECTICUT

Groton

June 10, 2010 8 am - 4 pm

MYSTIC MARRIOTT HOTEL & SPA

Route 117

Featured Speakers:

LT. GEN. RUSSEL HONORÉ
Commanding General
First United States Army

MARCIE ROTH
Director of Disability
Integration and Coordination
FEMA

Presenting Sponsor:



43 Enterprise Drive
Bristol, CT 06010-7472



CONFERENCE DESCRIPTION

Connecticut Community Care, Inc., (CCCI), the largest care management organization for elders and individuals with disabilities in Connecticut is commemorating its 30th Anniversary by hosting an event for professionals in the elder-care, disabilities and health-care communities, first responders and families who are concerned about being prepared in times of disaster.

The Myra Kerr Education Memorial Conference, named in memory of a former director of quality at CCCI, will be held for the first time in Eastern Connecticut. The topic will focus on elders and individuals with disabilities and their functional limitations when faced with the realities of a disaster—what to expect; how to prepare; and how to manage the necessary transitions. Panelists will update speakers on where things are in terms of preparedness here in Connecticut and then the speakers will offer their perspectives and advice concerning gaps and next steps.

ATTENDEES WILL:

- Get an overview of the experiences and impact previous disasters have had on people with functional limitations through the eyes of those who were in charge
- Hear a panel of local experts outline current efforts and issues here in Connecticut
- Listen to the panel and speakers conduct a discussion regarding existing concerns and gaps in plans
- Interactive discussion with the speakers and panel how gaps might be filled so if disaster strikes, Connecticut is prepared to assist those with functional limitations

CONFERENCE SCHEDULE

8:00 am — 9:00 am	Registration
9:00 am — 9:15 am	CCCI President - <i>Welcoming Remarks</i>
9:15 am — 10:30 am	Lt. Gen. Honoré - <i>Presentation</i>
10:30 am — 11:15 am	Cindy Hellyar - <i>Presentation</i>
11:15 am — 12:00 pm	<i>Panel Introduction & Comments</i>
12:00 pm — 1:30 pm	Lunch on Your Own <i>(box lunch available for purchase in advance - see registration form)</i>
1:30 pm — 2:15 pm	Marcie Roth - <i>Presentation</i>
2:15 pm — 4:00 pm	<i>Panel & Audience Interaction with Speakers</i>

REGISTRATION INFORMATION

Conference Fee Per Person: \$50 **Registration Deadline: JUNE 9, 2010**
(continental breakfast included) *(seating is limited and will be handled on a first come, first served basis)*

Further Information: Call Jolene at 860-314-2247 or e-mail joleneg@ctcommunitycare.org

FEATURED SPEAKERS

LT. GENERAL RUSSEL L. HONORÉ

Visionary Leader of the New Normal and Commander of Joint Task Force Katrina



When Hurricane Katrina struck New Orleans, the devastation was more than anyone could have imagined. Images of a city drowning and of the dire conditions at the Louisiana Superdome and Convention Center showed the world that the U.S. was ill-equipped and unprepared to deal with a natural disaster of such epic proportions. In spite of questionable leadership on many levels, one leader undeniably changed the course of the disaster: Lieutenant General Russel L. Honoré, the commanding general of Joint Task Force Katrina.

Honoré went to New Orleans, surveyed the destruction and took charge, bringing the city back under control and starting the long process of putting it back together. He is a no-nonsense career soldier who always speaks his mind. While in charge of the entire Army east of the Mississippi, he brought leadership to New Orleans, reminding soldiers to lower their weapons and help those in need, creating a more positive atmosphere.

Since his command of Joint Task Force Katrina, Honoré has brought the lessons of Katrina to organizations around the country. An expert on preparedness and responding to catastrophe, he offers insights into protecting people and organizations and leadership during unexpected and uncontrollable crises.

Honoré's lengthy career has taken him around the world. He has many awards and distinctions, including the Defense Distinguished Service Medal, the Defense Superior Service Medal, the Legion of Merit, and a Bronze Star, among others. Recently, he was awarded an honorary doctorate from Loyola University (New Orleans).

In May 2009, he published his first book, ***Survival: How a Culture of Preparedness Can Save You and Your Family from Disasters***. He serves as a CNN preparedness contributor; a senior scientist with Gallup; as chairman of the board of Grand ISS, a comprehensive risk solutions provider; and on the Expert Council of Firestorm Solutions, LLC, a national leader in business continuity, vulnerability analysis, risk mitigation, and crisis management.

The man that New Orleans Mayor Ray Nagin called a "John Wayne dude," Honoré has proven that by taking charge and creating a culture of preparedness, whether as an individual, a group, a city, or an entire country, unexpected crises can be managed and the impact can be minimized.

CONNECTICUT PANELISTS

SUE ROCHESTER BOLEN is the Senior Director of Emergency Services for the CT Chapter of the American Red Cross. She oversees the Red Cross emergency management program for the eastern part of Connecticut. During her 16 years in the position she has developed response plans for multiple disaster scenarios, as well as serving on disaster relief operations around the country including hurricanes Katrina, Ike and the 9/11 attacks. She also provides operations management during local emergencies from single family home fires to larger incidents such as the recent flooding. Bolen serves as the State of CT Regional RESF 6 Mass Care Chairperson, CERT leadership team, and is a member of multiple committees and organization focusing on emergency response and management in Eastern CT.

BARBARA DINGFELDER, RN, BSN, MPH is a clinical nurse specialist in Public/Community Health Nursing and a Certified Health Education Specialist. She has worked in multiple health care settings and nursing roles that include rehabilitation, perioperative care, home health, med. surg. and public health. Dingfelder joined the Dept. of Public Health in 2002 as a nurse consultant for the State's Breast and Cervical Cancer and Early Detection and WISEWOMAN programs. In 2005, she moved to the Local Health Administration Branch and has developed her role as the Local Public Health Nurse Liaison. Dingfelder has been the project coordinator for diverse projects related to emergency preparedness, integrating national public health standards, developing orientation materials and the Dept.'s Virtual Office of Public Health Nursing.

PATRICK R. MCCORMACK, MPH has been the Director of Health for the Uncas Health District since 2004. The district serves Bozrah, Montville, Norwich and Sprague, CT. McCormack serves as the Chairman of the public health regional preparedness function for DEMHS Region #4. He also is on the executive committee of the New London County Health Collaborative, the board of the directors for the Northeast District Department of Health, the Connecticut Association of Directors of Health, and the Southeastern Regional Action Council. McCormack is a CCCI Corporator and a member of the Norwich NAACP.

JEFFREY MONTAGUE, M.Div. is the Health Program Associate with the CT Dept. of Mental Health and Addiction Services at the Southeastern Mental Health Authority in Norwich. He serves as the team leader for the CT Disaster Behavioral Health Response Network, Reg. 4. Preparedness planning and exercising with allied health partners and traditional first responders is a primary component of his daily responsibilities. With a professional framework of pastoral care and chaplaincy and his involvement in emergency preparedness and response, Montague recognizes the needed collaboration between physical, emotional and spiritual care providers. Montague adds to his service: coordinator of the Faith Initiative at the MSHA; SMHA's EAP; Critical Incident Stress Management Team member; and health and safety coordinator.

MARCIE ROTH

Director, Office of Disability Integration and Coordination, FEMA

Marcie Roth, former Connecticut resident, was appointed to her position by President Obama in June 2009. Previously, she was the President and CEO of Global Disability Solutions Group, a leading national organization promoting diverse workforce initiatives with a focus on disability issues. Roth served as a senior member of the Obama for America Disability Policy Committee and served on President Obama's Justice and Civil Rights Transition Team.



Over the past 20 years, Roth has held leadership positions with the National Coalition for Disability Rights, National Spinal Cord Injury Assoc., National Council on Independent Living and TASH, the national disability rights organization. She is known for her work in developing and managing effective coalitions to advance public policy initiatives, and is frequently consulted as an expert on strategic approaches that fully integrate preparedness, response and recovery solutions. Roth led private sector response to the additional needs of survivors with disabilities during and after Hurricanes Katrina and Rita and she was commended by the White House for her efforts on behalf of New Yorkers with disabilities in the aftermath of the September 11, 2001 terrorist attacks. In addition to her own personal experience with disability, Roth is the parent of two children with disabilities, both on their way to achieving independence.

CINDY HELLYAR

Corporate Gerontologist, The Hartford

Cindy Hellyar is a gerontologist with The Hartford's Advance 50 Team. She is responsible for providing mature market insights to shape employee education and development of products and services for Hartford customers. Hellyar has been instrumental in the development of national public education programs that promote safety, mobility and independence for older adults.



Hellyar directed a multi-year qualitative research project with the MIT AgeLab that examined older adults' experiences with different types of natural disasters. The Hartford's Advance 50 Team, a group of in-house Hartford gerontologists and experts on aging, partnered with the MIT AgeLab to conduct focus groups consisting of family caregivers, elders and claims adjusters to discuss their experiences with different types of natural disasters. The company, committed to producing original research that influences the quality of life of older adults and families, has produced two publications, coauthored by Hellyar, regarding this issue. The consumer publications, ***It Could Happen to Me: Family Conversations about Disaster Planning***, and ***The Calm Before the Storm: Family Conversations about Disaster Planning, Caregiving, Alzheimer's Disease and Dementia*** examine the disaster planning needs of families and those of caregivers of persons with memory disorders.

THERESE A. NADEAU, MSW has worked as a disability and emergency preparedness consultant and is currently the project coordinator for the Self-Directed Support Services Program at CCCI. Nadeau conducts presentations regarding supports for people with disabilities and has educated on emergency preparedness, working with first responders and other emergency planners to evaluate the needs of people with disabilities in shelter and evacuation planning. Nadeau has helped train more than 1,300 first responders and emergency personnel in conjunction with the Capital Region Emergency Planning Committee/Capital Region Council of Governments. She and her service dog Sassy have completed the course for Community Emergency Response Team (CERT) and are members of a new team focusing on providing education and support to those with functional limitations in emergency situations.

DAMIAN M. RICKARD, EMS-I, MREMT-P is Director of Emergency Management and Operational Support, American Ambulance Service, Inc. where one of his primary responsibilities is emergency preparedness planning and response for this large ambulance service. He has been involved in emergency medical services in southeastern Connecticut for more than 13 years. Rickard has extensive background in public safety telecommunications, EMS Management and patient care practiced as paramedic and paramedic preceptor. Throughout his career, Rickard has participated in many significant events both as a provider and member of the Incident Management Team including responding to the World Trade Center on 9/11, the Lawrence & Memorial Hospital Fire in 2009 and the Middletown Power Plant Explosion in 2010. Rickard is a member of CT's Reg. 4 Incident Management Team and the CT-1 Disaster Medical Assistance Team. He serves on the CT Statewide Credentialing Committee, CT Region 4 ESF8, and the Norwich Public Safety Committee.

JOSEPH R. SASTRE has spent more than 30 years in public safety, first as a police officer. In 2002, he became the Emergency Management Director for the Town of Groton, responsible for coordinating emergency response in the community of 40,000 individuals, 11 fire departments, three police departments and two ambulance services. He manages the only full-service (police, fire and EMS) Regional 911 Dispatch Center in CT. Sastre chairs the Region 4 Emergency Planning Team Steering Committee representing the 43 municipalities within Region 4 and the chairs of each of the Emergency Support Function groups. He is a member of the CT Homeland Security Council, Training and National Incident Management Subcommittee, the CT Emergency management Association, the Office of Statewide Emergency Telecommunications, and the Emergency Notification Work Group.